

## B, 51 Mattock Lane, London, W13 9NT

A large two bedroom, recently refurbished raised ground flat in this period building. The property is situated on the highly desirable Mattock Lane just a short walk from Walpole Park.

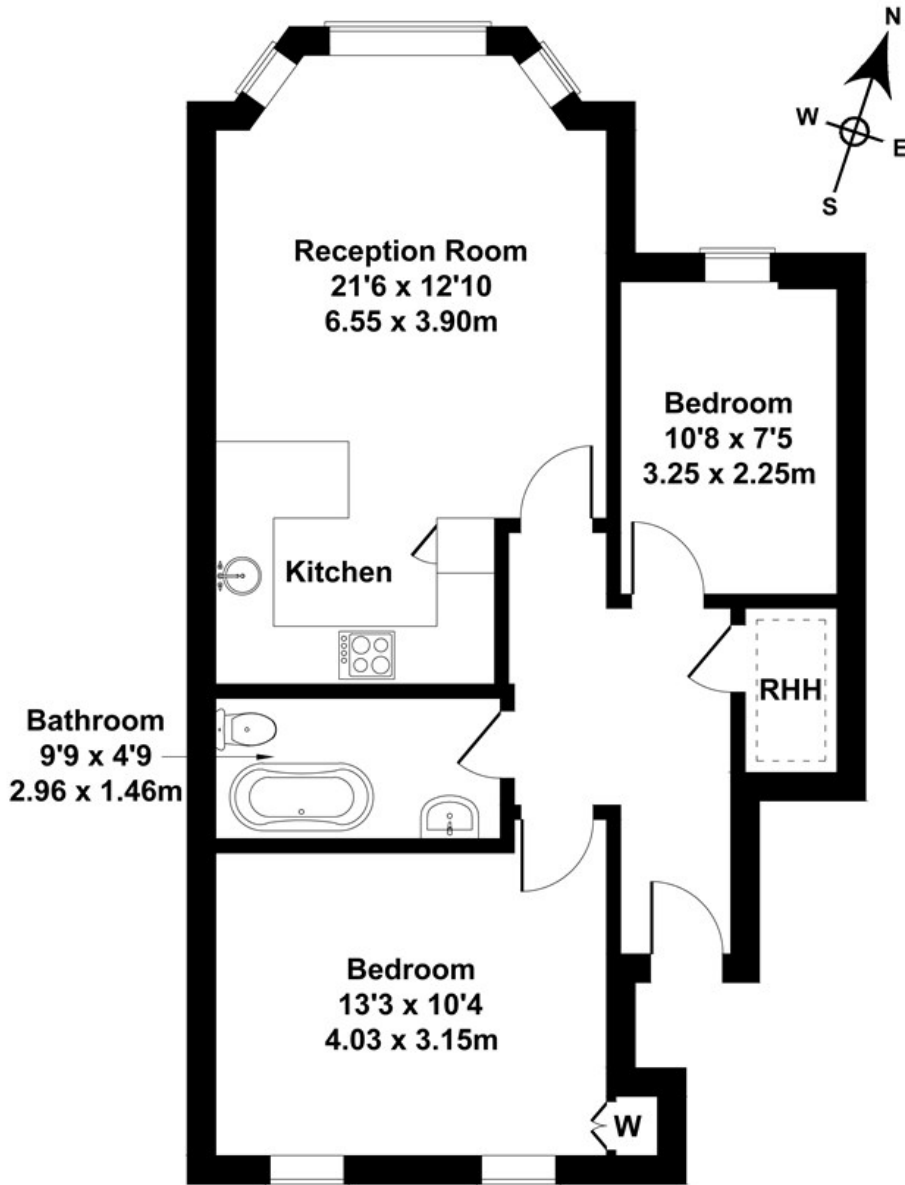
The flat is made up of a large reception, kitchen, two good sized bedrooms and family sized bathroom. The property benefits from high ceiling and great light which make this a desirable Ealing location ready to take full advantage of the new 'Filmwork' scheme at the tip of Mattock Lane leading into Ealing Broadway, and the town centre's general redevelopment.

£500,000

- Period conversion
- Two bedrooms
- Raised ground floor
- Recently refurbished
- Off street parking FCFS
- No chain
- Long lease 164 years
- Close to Ealing Broadway
- Close to Walpole Park
- Large living space

# Mattock Lane

Approximate Gross Internal Area  
657 sq ft - 61 sq m



## RAISED GROUND FLOOR

Not to Scale. Produced by The Plan Portal 2023  
For Illustrative Purposes Only.

Energy Efficiency Rating		Current	Potential
Very energy efficient - lower running costs			
(92 plus) <b>A</b>			
(81-91) <b>B</b>			
(69-80) <b>C</b>		71	79
(55-68) <b>D</b>			
(39-54) <b>E</b>			
(21-38) <b>F</b>			
(1-20) <b>G</b>			
Not energy efficient - higher running costs			
<b>England &amp; Wales</b>	EU Directive 2002/91/EC		